

Lightweight Portable Electric Breast Pump Food Grade For Feeding Moms

Our Product Introduction

for more products please visit us on oxygenconcentratormedical.com

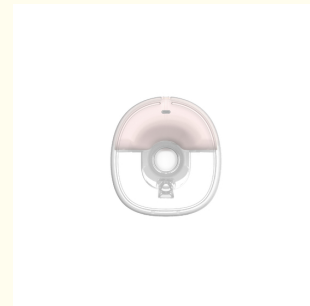
Basic Information

- Place of Origin: China
- Brand Name: HY
- Certification: CE/FDA/UKCA/FC/ROHS
- Model Number: S21
- Minimum Order Quantity: 24pcs
- Price: 23USD ~ 25USD
- Packaging Details: OPP packing with 24pcs per carton
- Delivery Time: 5-8 Working days
- Payment Terms: T/T, Western Union, MoneyGram, D/P, T/T, L/C, D/A
- Supply Ability: 300000PCS

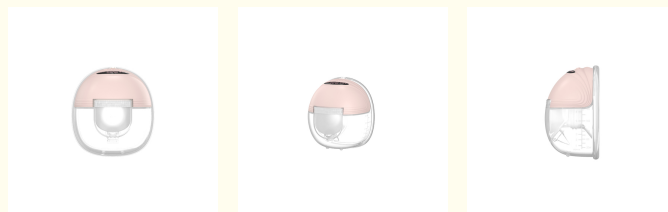


Product Specification

- Model Number: S12
- Material: Food Grade PP+Silicone
- Pattern Type: Printed
- Flow Velocity: Variable Flow
- Sevice: OEM/ODM
- Driven Type: Electric
- Shape: Large Arc Type
- Size: 136*111*70 MM
- Levels: 9-12 Levels
- Charging Time: 2 Hours
- Working Time: 80 Minutes
- Sample: Available
- Package: 24pcs Per Carton
- Highlight: **Portable Electric Breast Pump Food Grade,
Lightweight Portable Electric Breast Pump**



More Images



Product Description

How we chose the best breast pumps?

- We spoke to 10 moms on the What to Expect editorial team, who have five children between them and who've tested most of the pumps on this list.
- We utilized results from the [What to Expect Feeding Awards](#) and [What to Expect Mom Must-Have Awards](#) which, combined, polled more than 2,000 breastfeeding moms in the What to Expect Community
- We used What's to Expect's community of caregivers to get a consensus on which breast pumps moms consider the best for various lifestyles. Every breast pump on this list received an overwhelming number of positive reviews in the following areas:
 - Comfort
 - Portability
 - Ability to aid in milk expressions and/or production

Our Product Introduction

What to look for in a breast pump

As you start shopping, you'll want to find a breast pump that meets your specific needs — what works for one mom might not be the right choice for you. When researching the best breast pumps, [Andrea Tran](#), a certified lactation consultant, says to consider these important factors:

- **Pumping frequency:** Think about how often you'll be pumping. If you plan to pump at least a couple of times a week, a manual pump doesn't make sense, because you'll have to expend a lot of time and energy to use it. In that case, it's probably worth investing in a double-electric pump. And if you think you'll try exclusive pumping, you'll want to invest in the best model you can afford.
- **Noise level:** While no breast pump is entirely silent, some are louder than others. If you'll be pumping around other people, in an office or during conference calls, you may want to choose one that's generally recognized as being relatively quiet.
- **Weight:** If you'll be commuting to the office or traveling often, it can be helpful to have a lightweight pump.
- **Where you'll be pumping:** Will you have access to an electrical outlet? If not — say you envision pumping in the car on the way to work or in a bathroom — you may want to consider a double-electric model that comes with a battery pack or opt for a smaller, more portable battery-powered option. Some newer models can be worn under your shirt, allowing you to pump completely hands-free and without any obvious tubing or wires.
- **Cost and insurance coverage:** While some breast pumps are covered by insurance, you may want a second one to keep at the office — or you may want to upgrade to a better pump if you're willing to make an investment.
- **Replacement parts:** Parts like tubing and duck valves need to be replaced every so often. If you'll be pumping frequently, it pays to pick a pump that's compatible with widely-available replacement parts and you may want to have some extra parts to ease frequency of clean up. And if you have multiple pumps — say one for work and one for home — it can be more convenient to buy two of the same brand, since that means the parts (like bottles and flanges) will be compatible.

When considering the above, don't forget to think at least six to 12 months out, says Wendy Wright, a certified lactation consultant, since you may well be using your pump for that long. "A lot of new moms don't realize how much time (and physical effort) breastfeeding and/or pumping takes," she says. "Most infants eat every two to three hours until they reach 6 months of age, so we like to ask our moms if their lifestyle requires flexibility, freedom and mobility. We don't want moms to sacrifice their breastfeeding goals because their pump does not match their active lifestyle over the duration of their breastfeeding journey."

Types of breast pumps

There are three main types of breast pumps:

- **Electric breast pumps:** These models plug into a wall outlet and are typically the most powerful breast pumps you can buy. You can opt for a double-electric pump, which expresses milk from both breasts at the same time, or a single-electric model, which requires you to express from one breast at a time. (Single-electric breast pumps are less efficient, since they essentially double the amount of time you need to spend pumping, but they tend to be more affordable than double-electric models.)
- **Battery-operated breast pumps:** Battery-operated pumps come in both single and double models. There are also wireless breast pumps that allow for completely hands-free pumping. Battery-operated pumps tend to be smaller and more portable than electric pumps, and are ideal if you know you won't have easy access to an electrical outlet (such as when you're commuting to work or traveling). It should be noted that they often are not as powerful as the electric breast pumps.
- **Manual breast pumps:** Manual pumps are hand-operated, requiring the user to squeeze a lever repeatedly to create suction on the breast and express milk. These models are lightweight, portable and inexpensive. The downside? You'll be doing a lot of the work yourself with time and technique.

Why We Love It

One of the many benefits of a wearable breast pump is that you can pump just about anywhere, but the gig is up if your pump makes a telltale whooshing noise. Luckily, the [HY Pump](#) is one of the quietest on the market.

Another advantage is that it's also bag-free — you pump right into it, then transfer the milk straight into a bottle. After making the investment required for the pump, it's nice to save money there, although — yes — you will have to clean an awkwardly-shaped collection jar. (A flexible bottle brush should do the trick.)

The [HY Pump](#) is easy to use, too. You simply pop each 8-ounce pump into your bra, turn it on, and let it work its magic. Positioning can be a bit tricky at first, but you'll get the hang of it in no time. Just make sure to keep an eye on the output levels using your app — once the collection jar fills up, you risk milk backing up and out of the pump, causing quite a leaky mess.

Sarah used the [HY Pump](#) often during the four months she pumped (three of which she was exclusively pumping), and deems it a truly incredible pump. "I loved that I could just wear my regular nursing bra and pop my Elvie right in, plus it was super quiet and discreet enough that I could do pretty much anything while wearing it," she says, though notes that she couldn't bend over without pausing. "I also found that the Pump was super easy to clean between pumping sessions."

Sarah, like many other moms, mentions that the suction on the HY pump is not as strong as regular pumps, which may impact how much you express in a session.

Weight: 0.5 pounds

Wearable Breast Pump fits perfectly

Invisible design



Free hands enjoy free breast pump



Six advantages elaborate design

Product features



Hand-free design
Wireless hands Liberation



Easy to wear
Invisible design



LED display
Visualization of breast
feeding process



3 Modes
12 gear adjustment



Safe and reliable
Backflow prevention de-
sign



Safe and reliable
We manufacture

Ergonomic design

Perfect fit invisible wear

Really let mothers free their hands

Enjoy the free time of breastfeeding



 **Shenzhen Emeng
Health Technology Co.,
LTD**

+86 13760822077



kaylayi0612@foxmail.com



oxyge