

Covid Antigen Test, Convenient Covid 19 Antigen Rapid Test With Saliva Or Sputum Sample Easy To Use

Our Product Introduction

for more products please visit us on oxygenconcentratormedical.com

Basic Information

- Place of Origin: China
- Brand Name: DVOT
- Certification: CE/BfArM/ PEI /TGA/NMPA/BfArM
- Model Number: Saliva / Sputum
- Minimum Order Quantity: 1250Test
- Price: 0.8~1USD per Test
- Packaging Details: Each boxes 25tests packing /17.5 kg per carton. 64*34*55cm 1250 test per Carton.
- Delivery Time: 5-8 Working days
- Payment Terms: T/T, Western Union
- Supply Ability: 1000000pcs



Product Specification

- Product Name: (SARS-COV-2) Rapid Antigen Test Kit
- Formats: Cassette
- Specifications: Cassette(3mm, 4mm) Or According To The Customers' Requirements
- Reaction Time: 10-15 Minutes
- Shelf Life: 24 Months At Room Temperature 4- 30 Degrees
- Others: The Kits Can Be Made According To The Customers' Artwork Or Design
- Time Of Use: One Time Off Use Only
- Highlight: Convenient Covid 19 Antigen Rapid Test, Saliva Covid 19 Antigen Rapid Test, Covid 19 Antigen Saliva Test Kit



More Images

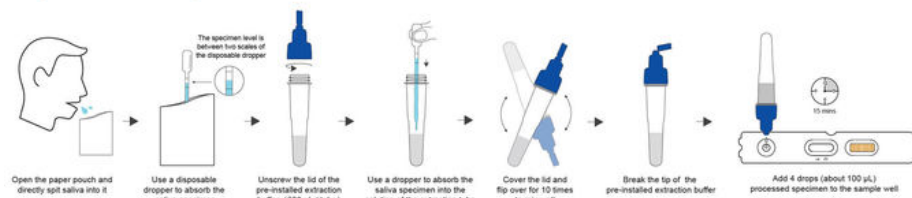


[illegible]

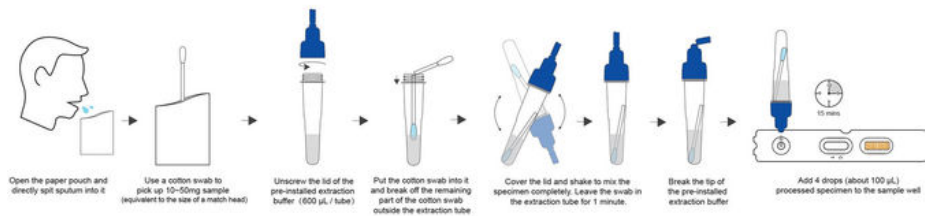
The Novel Coronavirus (SARS-CoV-2) Antigen Rapid Test Kit is a chromatographic immunoassay intended for the qualitative detection of the nucleocapsid protein antigen from SARS-CoV-2 in nasopharyngeal swab or oropharyngeal swab specimens directly from individuals who are suspected of COVID-19 by their healthcare provider within the first 7 days of symptom onset.

The test can be done with saliva or sputum specimen, both methods are very comfortable for the patient.

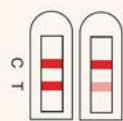
(Option A) Saliva specimen collection



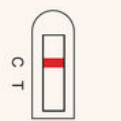
(Option B) Sputum specimen collection



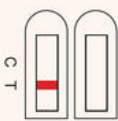
RESULT INTERPRETATION



Positive



Negative



Invalid

* C=Control Line
T= Test Line

Key benefits

Reliable test performance

Rapid answers in only 15 minutes

Support in the differential detection of SARS-CoV-2

Easy handling, only 4 steps needed

Fully integrated test, only one application area and single sample are needed

Optimized composition to detect antigens against several dominant variants of the SARS-CoV-2

Access to testing in areas where laboratory testing is not available

Data matrix code on each test device for facilitated result sharing

Performing the test

Simple to perform and fast results within 15 – 30 min*

Performing the test

Place the test device on a flat surface and apply 4 drops of extracted sample at a 90° angle to the specimen well of the test device.



Shenzhen Emeng Health Technology Co., LTD



+86 13760822077



kaylayi0612@foxmail.com



oxygenconcentratormedical.com

Room D, 7th Floor, Guang Long Building, 162 Ping Xin North Road, PingHu Street, LongGang District, Shenzhen