

O2EMENG Hyperbaric chamber 1.3 ata adjustable include Refrigerating system

Our Product Introduction

for more products please visit us on oxygenconcentratormedical.com

Basic Information

- Place of Origin: SHENZHEN EMENG HEALTH
- Brand Name: O2EMENG
- Certification: CE/FDA/FC/ROHS/UKCA/SGS
- Model Number: EMY06
- Minimum Order Quantity: 1PC
- Price: \$25000
- Packaging Details: wooden packing
- Delivery Time: 15-20 work days
- Payment Terms: D/P, T/T, Western Union, MoneyGram
- Supply Ability: 100PCS



Product Specification

- Chamber Oxygen Concentration: 28% 32%
- Sound Level: $\geq 43\text{dB}$
- Chamber Temperature: Cooling Adjustable
- Rated Power: 1500W
- Voltage: 220V, 50Hz
- The Chair Maximum Adjustable Angle: 135°C
- Cabin Size: 200*170*190CM
- Cabin Weight: 1100KGS
- Intelligent Host Size: 80*40*85CM
- Intelligent Host Weight: 56KGS
- Highlight: 1500w hyperbaric oxygen chamber, 1500w oxygen hyperbaric chamber



More Images



Product Description

O2EMENG Hyperbaric chamber 1.3 ata adjustable,include Refrigerating system

Product Description:

The O2EMMENG EMY06 model hyperbaric oxygen chamber is an advanced airtight chamber designed for hyperbaric oxygen therapy, which contains excellent craftsmanship and advanced technology, making it a common product in the medical community, homes, clubs, and beauty salons. The chamber utilizes the latest in hyperbaric oxygen technology to provide precisely controlled oxygen concentration and pressure, ensuring that patients receive optimal oxygen therapy results during treatment.

Among other things, the hyperbaric oxygen chamber can improve these symptoms:

1. Asthma, bronchitis, pneumonia, acute carbon monoxide poisoning, post-stroke, cerebral hemorrhage, arteriosclerosis, diabetes, heart disease.
2. Treat Alzheimer's disease, stroke, muscle paralysis, neurological disorders, autism, schizophrenia, headache and migraine.
3. Treat insomnia, improve poor blood circulation and prevent Alzheimer's disease.
4. Therapeutic effect on diabetic retinitis and keratitis.
5. Promote swelling reabsorption stimulation, cell regeneration after micro-integration surgery, promote muscle and bone wound healing.
6. Treatment of traumatic infections, acute soft tissue injuries, ulcers, burns, wounds, fractures, etc.
7. Acne, herpes simplex, herpes zoster, cicatricial alopecia, dermatologic treatment, etc.
8. auxiliary therapeutic effect on infertility, and obvious auxiliary therapeutic effect on postpartum recovery and postpartum restoration.
9. It has obvious therapeutic effect on the rehabilitation of children with congenital cranial nerve defects and congenital brain development problems.
10. Accelerates skin cell repair and regeneration, improves skin cell activity, promotes lipolytic enzyme activity, and reduces body weight.

The EMY06 model is designed not only with medical safety and effectiveness in mind, but also focuses on patient comfort and convenience during treatment. Its spacious interior and user-friendly interface allow for easy monitoring and adjustment by healthcare professionals, ensuring that each patient receives a personalized treatment plan.

In addition, O2EMMENG's EMY06 model hyperbaric chambers are characterized by excellent durability and reliability, and undergo rigorous quality control and testing to ensure stable operation over long periods of time without the need for frequent maintenance.

All in all, the EMY06 model hyperbaric chamber not only embodies the combination of technological innovation and medical care, but also provides healthcare organizations with an efficient and safe oxygen therapy solution, aiming to improve the patient experience and efficacy, which is one of the highlights of modern medical equipment.

Advantages:

The O2EMMENG EMY06 model hyperbaric chamber has several significant differences and advantages over traditional hyperbaric chambers:

1. **Advanced Technology and Control Systems:** The EMY06 model utilizes the latest in hyperbaric technology with a precise oxygen concentration and pressure control system. Traditional hyperbaric chambers may use more basic controls that do not provide the same precise regulation and monitoring capabilities.
2. **New Hyperbaric Oxygen Equipment:** Intelligent all-in-one machine, unlike traditional equipment, does not require the operation of three machines, Oxygen Equipment + Aerodynamic Equipment + Air Cooler, realizing easy one-button operation and saving time and effort.
3. **Comfort and User Experience:** The EMY06 model is designed with a more spacious and comfortable interior space, taking into account the patient's comfort and convenience during treatment.
4. **Durability and Reliability:** The EMY06 model undergoes rigorous quality control and testing to ensure stable operation over long periods of time without frequent maintenance.
5. **Technological innovations and safety:** The EMY06 model integrates new technological innovations that enhance safety and therapeutic efficacy. It allows for more precise control of oxygen delivery to support medical treatments more effectively.

Support and Services:

The Hyperbaric Oxygen Chamber product comes with comprehensive technical support and services to ensure that you

get the most out of your investment. Our team of experienced technicians and engineers are available to provide support and assistance whenever you need it.

Our technical support services include:

1.Demand customization: according to your use environment and expectations, recommend the optimal core products and life aesthetics composition scheme.

2.Exclusive design: the advanced technology team and the top design team jointly, from the size and color material matching, the actual program customization landing.

3. Craftsmanship Manufacturing: The core components and other materials of hyperbaric chamber series products are manufactured in aerospace material factories.

4. Lifetime maintenance: provide perfect professional after-sales service guarantee

At Hyperbaric Oxygen Chamber, we are committed to providing the highest level of support and service to our customers. Contact us today to learn more about our technical support and services.



SHIPPING & PAYMENT

YILONG

HANGZHOU YILONG MEDICAL EQUIPMENT CO.,LTD



The Use of Hyperbaric Oxygen Chamber

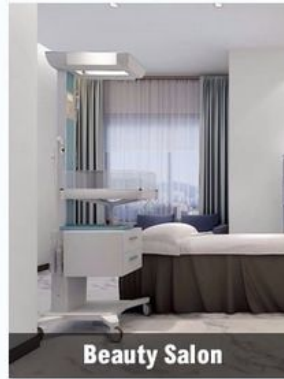
Always prepare at home, say goodbye to sub-health



Family



Clubhouse



Beauty Salon

If you want to know more about this product or want to buy this product please contact us!



O2EMENG

After Sale Service

WhatsApp: +86 13760822077

E-mail: kaylayi0612@foxmail.com

Hotline: +86 13760822077

Official website: emoxygen.com



Shenzhen Emeng Health Technology Co., LTD

+86 13760822077

kaylayi0612@foxmail.com

oxygenconcentratormedical.com

Room D, 7th Floor, Guang Long Building, 162 Ping Xin North Road, PingHu Street, LongGang District, ShenZhen